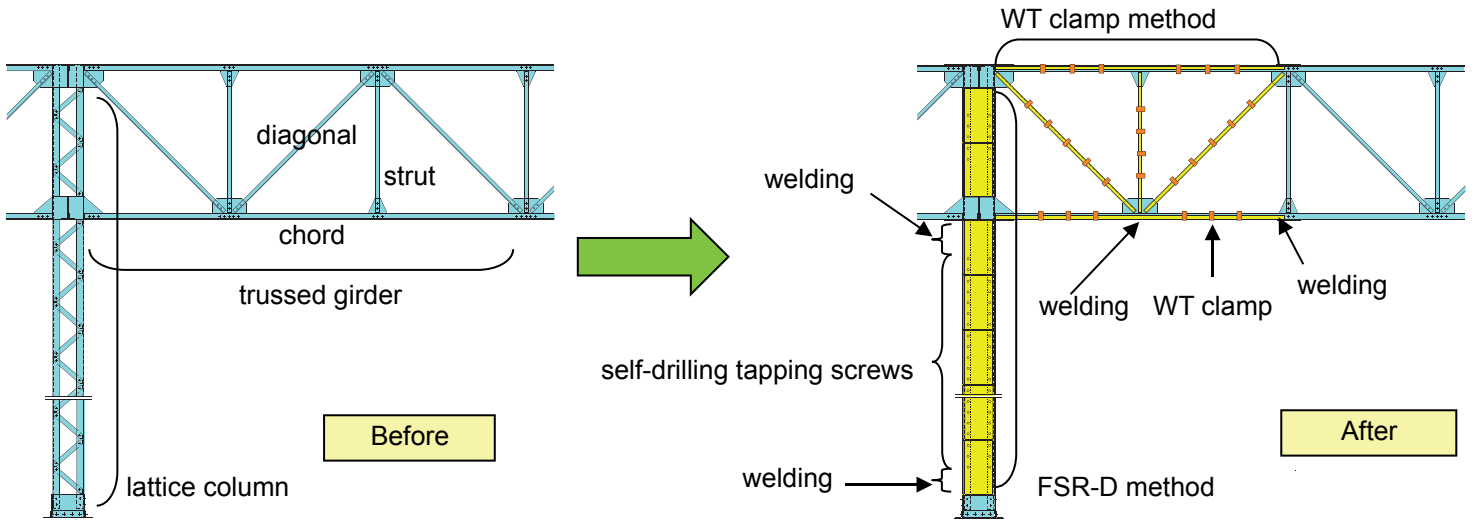




Fujita Retrofit Method for Factories

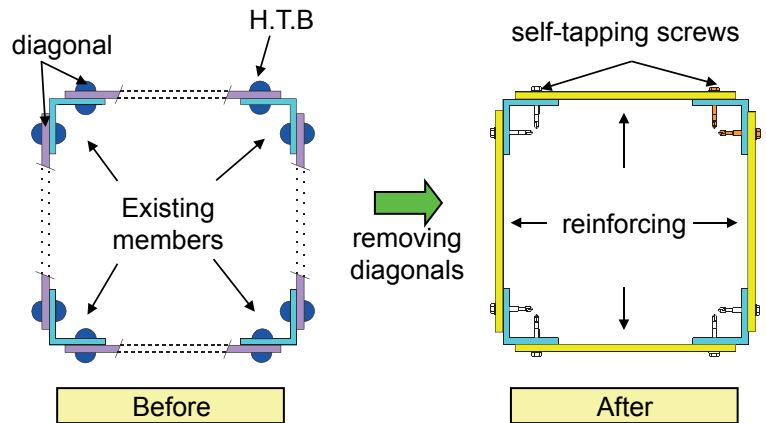
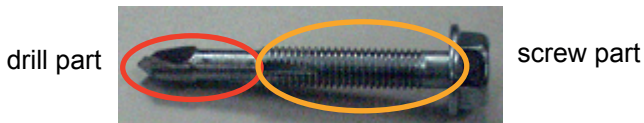
Steel Reinforcing Method with reduced welding

The Fujita retrofit method for factories (FSR-D method, WT clamp method) shortens the construction by reducing the need welding work.



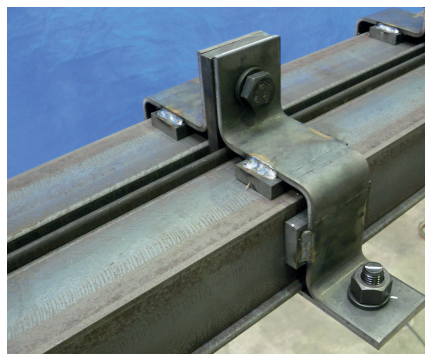
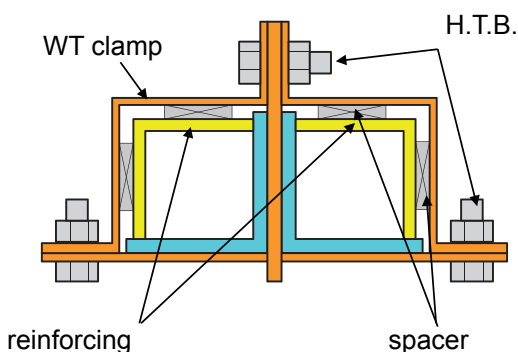
FSR-D method

FSR-D is a method that connects reinforcing steel plates to existing members using self-drilling tapping screws.



WT clamp method

WT clamp method reinforces trussed girder.



Both method have acquired third party performance certification